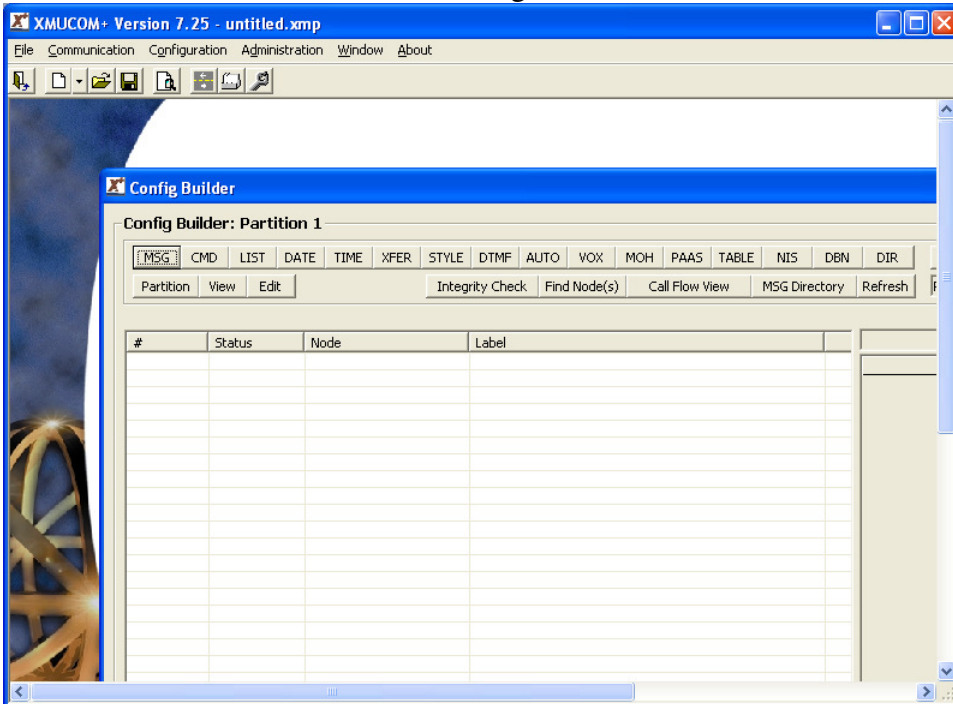


Retrieving Statistics using XMUCOM+

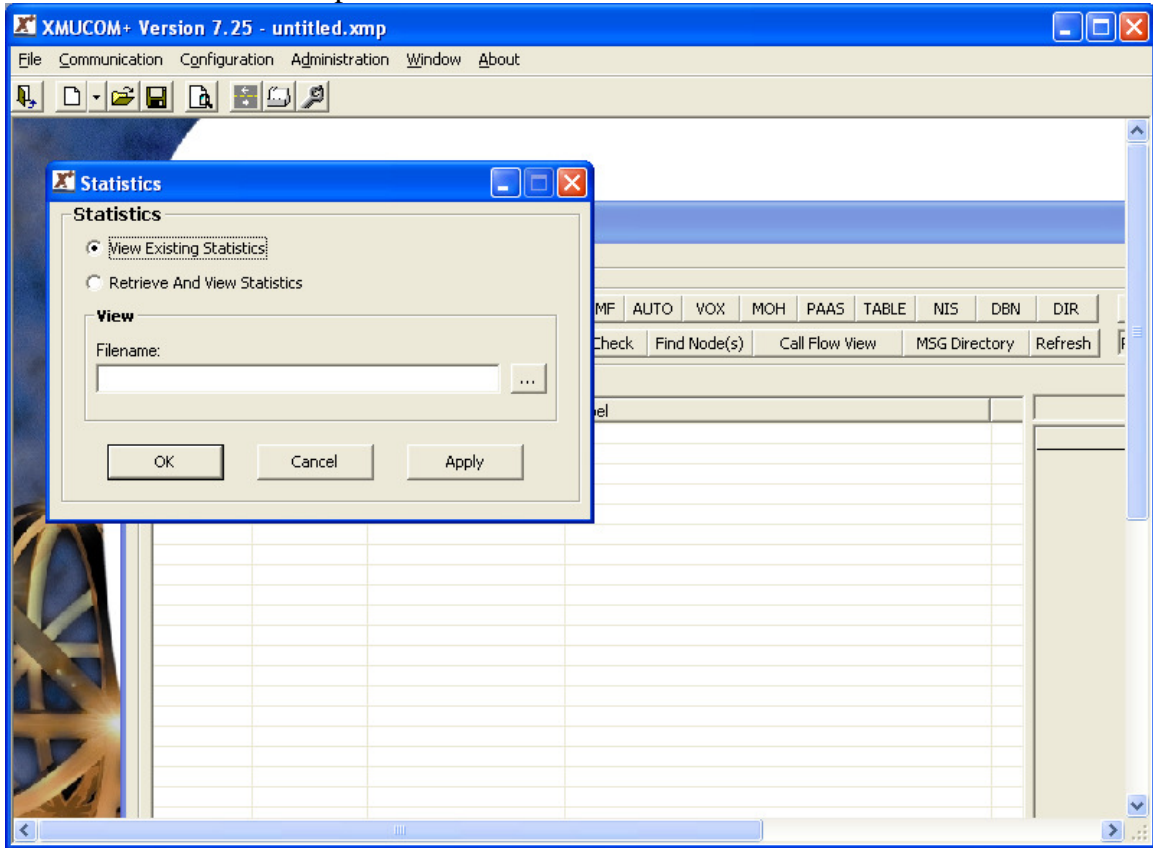
When you first start up XMUCOM+ software you get this screen.



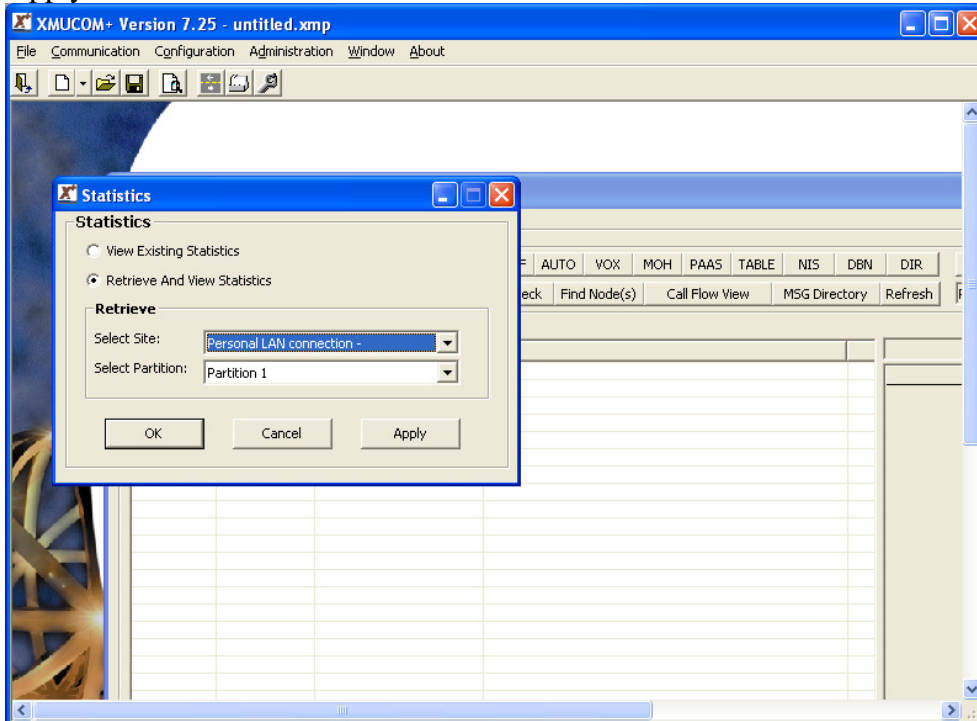
Select File, New, XMU+ or SBX Configuration.



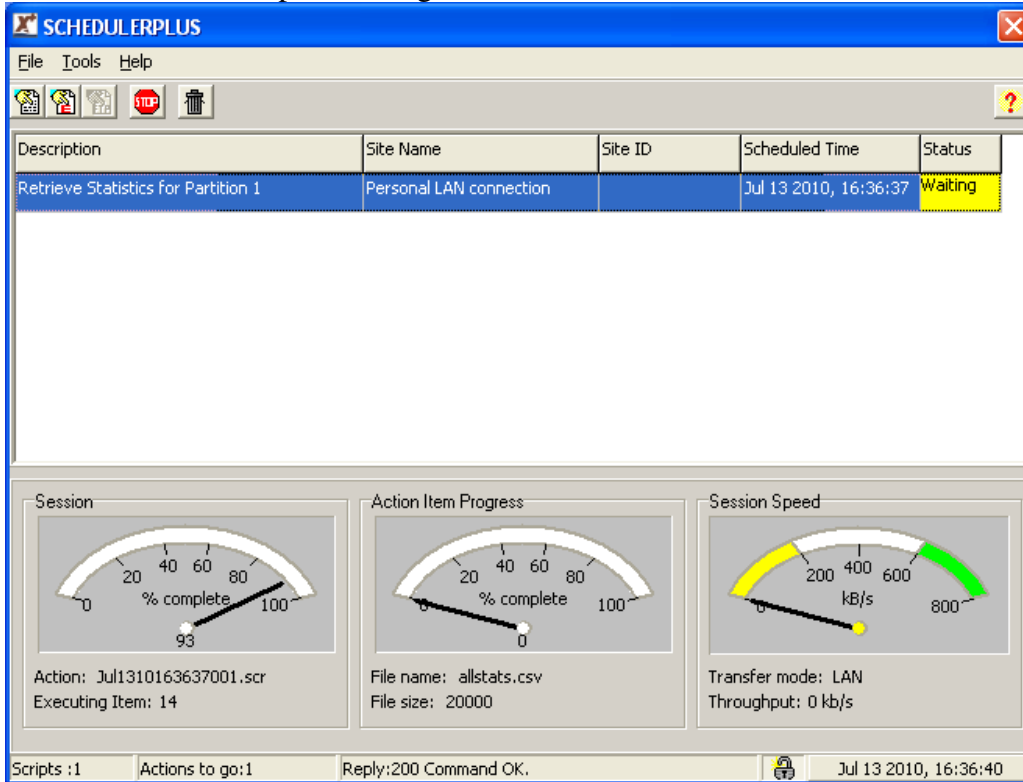
Go to the Administration pull down and select Statistics.



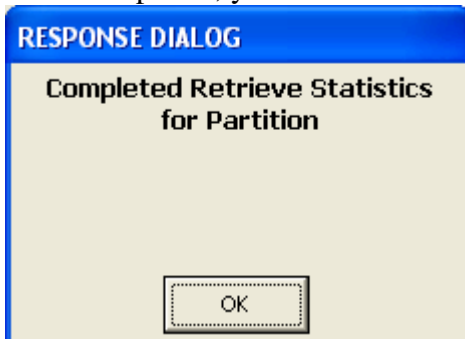
Choose the XMU+ site name and specify which partition you want statistics from. Press Apply.



Scheduler Plus will open and begin to retrieve the stats file.



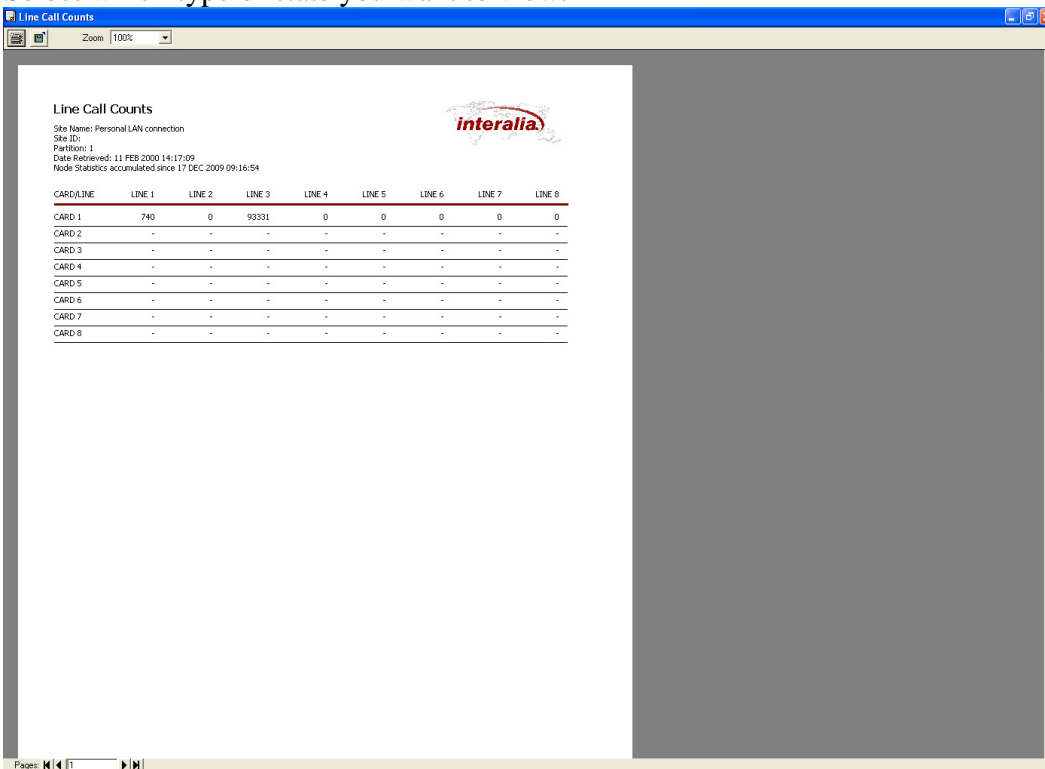
Once completed, you will see a confirmation message.



Click OK and you'll see a list of different statistics to choose from.



Select which type of stats you want to view.



Or press the “Save As” button to save the statistics file locally.